

# SHARK 281 CCS MA

Manual pull-down band sawing machine to cut solids that has always been our BEST-SELLER MODEL and can work with or without operator



□ MANUAL SAW

□ BAND BLADE

□ FOR +60° CUTTING

CCS (Cutting Control System):

- The CCS device allows to perform single cuts without operator intervention by using the operating head weight controlled by a spring and hydraulic brake.

- The CCS device can be provided as a KIT to install in already manufactured machines.

- By assembling the CCS device, it is possible to order the optional pneumatic vise (the opening/closing of the pneumatic vise is performed by means of a hand operated valve).

## CUTTING RANGE

	●	■	▬
0° / mm	250	230	280 x 200
+45° / mm	190	180	180 x 180
+60° / mm	120	110	110 x 110

Max. open vice 285 mm

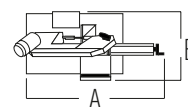
## PERFORMANCE CHARACTERISTICS

Blade size	2950 x 27 x 0.9 mm
Blade speed	36 / 72 m/min
Blade motor	1.5 / 1.8 Kw
Capacity of coolant tank	22 L
Total input power	1.86 Kw

## WEIGHT AND DIMENSIONS

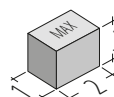
Height of working table 860 mm

Weight 370 kg



A = 1785 mm

B = 800 mm



1 = 1000 mm

2 = 1700 mm

3 = 1650 mm