

SHARK 282 SXI EVO

2 cutting angles and 3 operation systems make this semi-automatic sawing machine one of a kind



□ SEMIAUTOMATIC SAW

□ ELECTROHYDRAULIC

□ BAND BLADE

□ FOR CUTTING FROM -45° TO $+60^{\circ}$.

It is also equipped with the manual and semi-automatic/dynamic cycle.

CUTTING RANGE

	●	■	▬
0° / mm	250	220	280 x 220
$+45^{\circ}$ / mm	230	200	220 x 200
$+60^{\circ}$ / mm	120	80	140 x 80
-45° / mm	200	170	200 x 140
Max. open vice	285 mm		

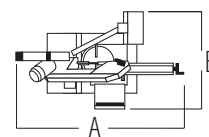
PERFORMANCE CHARACTERISTICS

Blade size	2950 x 27 x 0.9 mm
Blade speed	40 / 80 m/min
Blade motor	1.5 / 1.8 Kw
Capacity of coolant tank	13 L
Capacity of the hydraulic tank	2.5 L
Total input power	2.176 Kw

WEIGHT AND DIMENSIONS

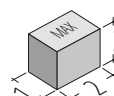
Height of working table 861.5 mm

Weight 475 kg



A = 1650 mm

B = 1150 mm



1 = 1000 mm

2 = 1700 mm

3 = 1840 mm