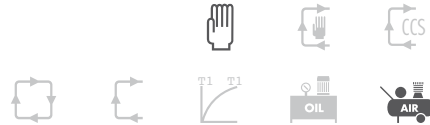




# FALCON 352/MA



FALCON 352 manual pivot circular saw machine to cut ferrous material mitering from -45° to +60°, using hss blade.

Structure in grey cast iron G25, reducing drastically vibrations, grant a better stability and longer blade life.

FALCON 352 is available as a bench model or eventually with the steel base, with a 2-speed three-phase motor. Furthermore upon request it can be supplied with an automatic vice (FALCON 352 MA, so that the vice closes automatically when lowering the head). In the MA version the machine is always supplied complete with steel base.

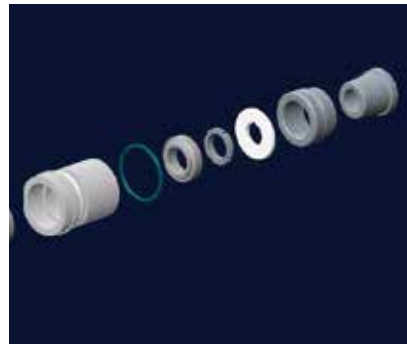
#### FEATURES:

- Motor insulation class IP54.
- Worm screw shaft mounted on a pair of bushings.
- Blade shaft assembled on two preloaded taper

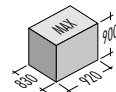
- bearings on eccentric bushing.
- Externally adjustable blade clutch.
- Clamping system by means of vice screw which slides on taper slide with adjustable gib.
- Angles scale engraved on the rotating table.
- Vice jaws can be adjusted sideways so as to clamp properly the material.
- Adjustable steel anti-burr device.
- Coolant submerged pump V.48.
- Double head return spring.
- Adjustable measuring stop device to make cuts of the same length displayed on a millimeter scale.
- Stock support arm with roller predisposed to mount loading table.
- Machine predisposed to be uplifted.
- The machine is supplied without saw blade.
- Service keys and instructions manual for maintenance and spare parts list.



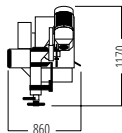
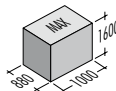
OPTIONALS FROM PAG 61 - N° 01 - 02 - 05 - 25 - 64 - 71 - 79



FALCON 352



FALCON 352MA



	FALCON	HSS					∅	∅	∅	∅	∅	
	kg	mm	kW	rpm	mm	0°	350	115	100	130x80	250	50
352	220	350x32x2,5	1,1/2,2	30/60	130	+45°	350	100	85	90x80	250	40
352MA	245					-45°	350	75	75	90x65	250	40